

Our products are designed to be used correctly and with care for the purpose for which they are intended. No liability is accepted by the Tool Connection for incorrect use of any of our products, and the Tool Connection cannot be held responsible for any damage to personnel, property or equipment when using the tools. Incorrect use will also invalidate the warranty.

If applicable, the applications database and any instructional information provided has been designed to offer general guidance for a particular tool's use and while all attention is given to the accuracy of the data no project should be attempted without referring first to the manufacturer's technical documentation (workshop or instruction manual) or the use of a recognised authority such as Autodata.

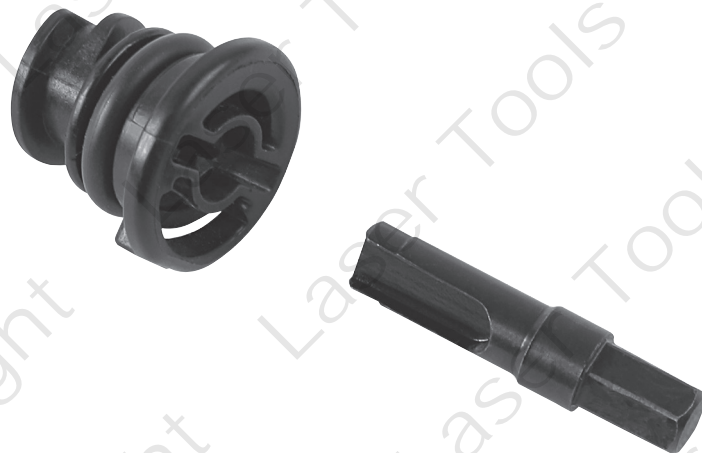
It is our policy to continually improve our products and thus we reserve the right to alter specifications and components without prior notice. It is the responsibility of the user to ensure the suitability of the tools and information prior to their use.

Part No. 6242

LASER[®]

Sump Plug Removal Tool

VAG 2L 4 Cyl



5 018341 062422 >



When you have finished with this tool please recycle it

www.lasertools.co.uk



Distributed by The Tool Connection Ltd
Kington Road, Southam, Warwickshire CV47 0DR
T: +44 (0) 1926 811000; F: +44 (0) 1926 811588
info@toolconnection.co.uk www.toolconnection.co.uk

Guarantee

If this product fails through faulty materials or workmanship, contact our service department direct on: **+44 (0) 1926 818186**. Normal wear and tear are excluded as are consumable items and abuse.



www.lasertools.co.uk

www.lasertools.co.uk

Introduction

Developed specifically for the plastic sump plugs found on the latest VAG range. Being plastic it is imperative that the correct tool is used to prevent damage.

It is recommended that the sump plug is always replaced once removed.

Description

A one piece adaptor with a 1/4" Hex end.
The working end of the tool has been specifically designed to fit the OEM sump plug (06L-103-801).

Equivalent to OEM T10549



Designed to be used with a 1/4"D bit driver (available from Laser - **Part No. 6197**).

Also available from **Connect Workshop Consumables...**

1 x sump plug (OEM 06L-103-801) - **Part No. 31771**

3 x sump plug (OEM 06L-103-801) + 1 x removal tool (OEM T10549)

- **Part No. 31772**

Applications

Manufacturer	Model	Engine	Year
Audi		2.0lt 4v turbo direct injection Gen III	2013
Seat	Leon	2.0lt 4v turbo direct injection Gen III	2013
Volkswagen	Golf Mk VII	2.0lt 4v turbo direct injection Gen III	2013

Applications are for guidance only.

Instructions



The plug turns and then clicks into place. A tooth on the plug and a notch in the face of the sump ensures the plug is locked in the correct position.

It can only be fitted correctly and cannot be over tightened.

Always fit a new sump plug with new 'O' ring seal.